



Fuse-On Towing Heads

Pulling Heads & Fuse-ons

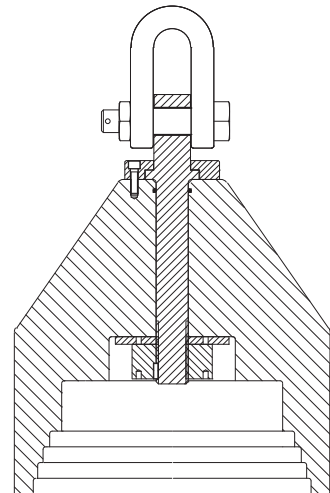


Our range of Fuse-On Towing Heads are machined from solid polyethylene rod. They have a sealed eyebolt to keep the inside of the pipe clean and steps at the back for trimming down to suit various SDR pipe thicknesses.

PE Fuse-On Towing Heads Features

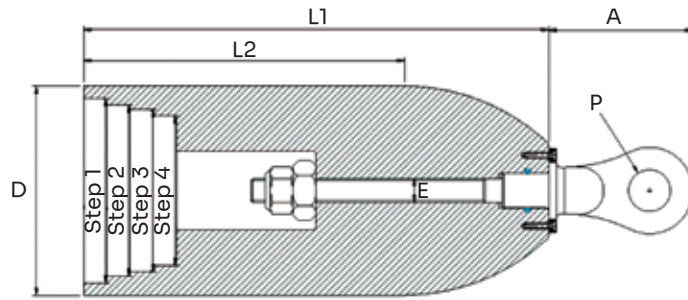
Product Features

- Simple to use — butt fuse to the pipe to give a reliable, sealed, pulling method. Saw off (with a length of pipe) ready to use again.
- Machined from solid polyethylene for high strength.
- Drop forged, high tensile alloy steel eyebolt for superior attachment.
- Rear stepped design allows for trimming back to suit various SDR pipe walls.





Pulling Heads & Fuse-ons



Technical Specifications

Brewis Part No.	D (mm)	L1	L2	A	Step 1	Step 2	Step 3	Step 4	P	E	Breaking Load (T)	Weight (Kg)
4-54050	50	165	131	50	39 only, not stepped				Ø 19	3/8" W	4.5 T	0.5
4-54063	63	200	149	60	50 SDR 9 & 11	45 SDR 7.4			Ø 30	1/2" W	7.2 T	0.8
4-54075	75	200	149	60	58 SDR 9 & 11	53 SDR 7.4			Ø 30	1/2" W	7.2 T	1.0
4-54090	90	250	189	110	79 SDR 17	74 SDR 11	70 SDR 9		Ø 38	3/4" W	19 T	2.5
4-54110	110	330	255	110	97 SDR 17	90 SDR 11	85 SDR 9		Ø 38	3/4" W	19 T	3.5
4-54125	125	330	248	110	110 SDR 17	102 SDR 11	97 SDR 9	90 SDR 7.4	Ø 38	3/4" W	19 T	4.0
4-54140	140	330	235	110	123 SDR 17	115 SDR 11	109 SDR 9	98 SDR 7.4	Ø 38	3/4" W	19 T	5.0
4-54160	160	330	221	155	141 SDR 17	131 SDR 11	124 SDR 9	116 SDR 7.4	Ø 44	1" W	30 T	8.0
4-54180	180	330	203	155	159 SDR 17	147 SDR 11	140 SDR 9	130 SDR 7.4	Ø 44	1" W	30 T	9.3
4-54200	200	330	185	155	176 SDR 17	164 SDR 11	155 SDR 9	146 SDR 7.4	Ø 44	1" W	30 T	10.5
4-54225	225	500	332	155	199 SDR 17	184 SDR 11	174 SDR 9	161 SDR 7.4	Ø 44	1" W	30 T	19.0
4-54250	250	500	310	155	220 SDR 17	205 SDR 11	194 SDR 9	179 SDR 7.4	Ø 44	1" W	30 T	23.0
4-54280	280	500	299	155	247 SDR 17	229 SDR 11	217 SDR 9	200 SDR 7.4	Ø 44	1" W	30 T	26.0
4-54315	315	500	297	270	278 SDR 17	258 SDR 11	245 SDR 9	228 SDR 7.4	Ø 60 x 95 (17T Shackle)	1 1/2" W	70 T	46.0
4-54355	355	500	333	270	313 SDR 17	290 SDR 11	276 SDR 9	258 SDR 7.4	Ø 60 x 95 (17T Shackle)	1 1/2" W	70T	52.0
Please discuss your project with us so the correct specification can be quoted												
4-54400	400	500	324	270	353 SDR 17	327 SDR 11	310 SDR 9	290 SDR 7.4	Ø 60 x 95 (17T Shackle)	50.8 x 6 *	120 T (Shackle 85 T)	57.0
4-54450	450	500	318	270	397 SDR 17	368 SDR 11	350 SDR 9	328 SDR 7.4	Ø 60 x 95 (17T Shackle)	50.8 x 6 *	120 T (Shackle 85 T)	47.0
4-54500	500	500	258	270	440 SDR 17	426 SDR 13.6	409 SDR 11	388 SDR 9	Ø 60 x 95 (17T Shackle)	50.8 x 6 *	120 T (Shackle 85 T)	66.5
4-54560	560	700	455	400	494 SDR 17	458 SDR 11	435 SDR 9		Ø 78 x 124 (35T Shackle)	76.2 x 6 **	315 T (Shackle 175 T)	210.0
4-54630	630	700	408	400	555 SDR 17	516 SDR 11	489 SDR 9		Ø 78 x 124 (35T Shackle)	76.2 x 6 **	315 T (Shackle 175 T)	230.0
4-54710	710	700	350	400	626 SDR 17	581 SDR 11	550 SDR 9		Ø 78 x 124 (35T Shackle)	76.2 x 6 **	315 T (Shackle 175 T)	247.0

* Supplied with 17T Dee Shackle

** Supplied with 35T Dee Shackle or can be upgraded to 55T Bow

Material - Black PE100, Density 0.95g/cm³, Yield Strength 28N/mm², Melting Point 127°C