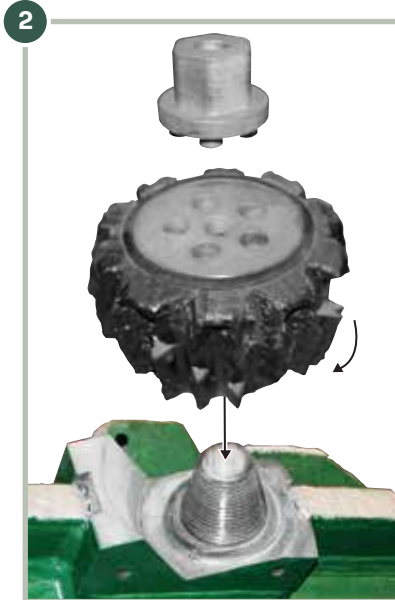
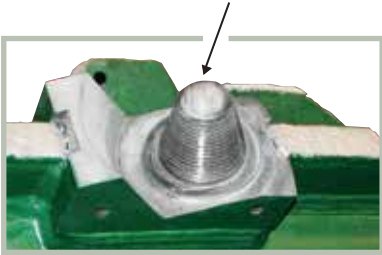


Lo Torque Hole Opener Installation guide & steps

- 1** Liberally dope spindle threads with a quality pipe thread compound (not grease).



Slip the journal of the cutter over the spindle and turn clockwise.



- 3** Insert adapter until flush with the journal face.



Use the wrench to tighten the cutter to the designated torque. (See table below).



Journal size	Recommended torque
LT4	1,500 ft-lbs
LT6	4,500 ft-lbs
LT8	12,000 ft-lbs