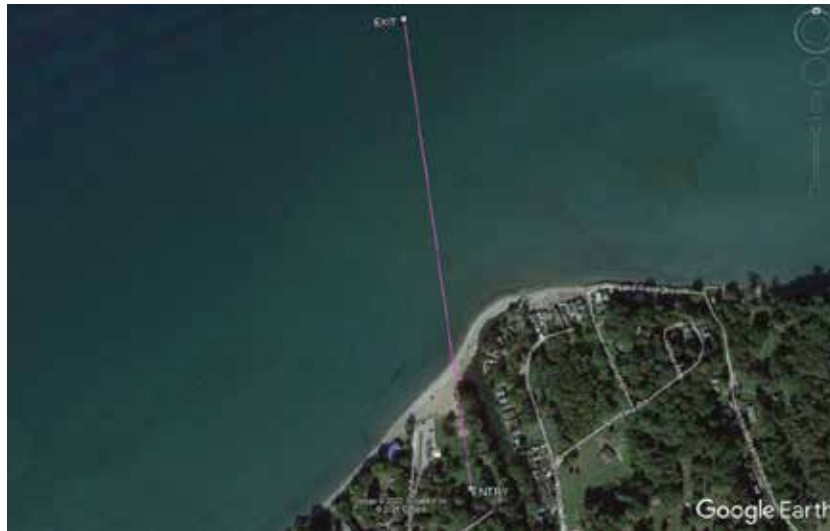


**North East Shore Approach**



**Gyro Module and ParaTrack 2**

**Shore Approach: North East, PA, USA**

**Distance: 691m (2267')**

**True Vertical Depth: 26m (85')**

**Product Pipe Installed: 508mm (20")**

**Tracking used: Gyro Module & ParaTrack 2**

**Technique used: Shore Approach**

This shore approach project took place in North East PA. Total length was 691m (2267'). The ParaTrack Gyro Module was used with a mud motor and a 10 ¼" bit. The ParaTrack Gyro Module guided the bore for most of the pilot hole and placed the punch out location exactly where it was designed under the water. The location was verified by divers and the contractor carried on with reaming and pulling operations.